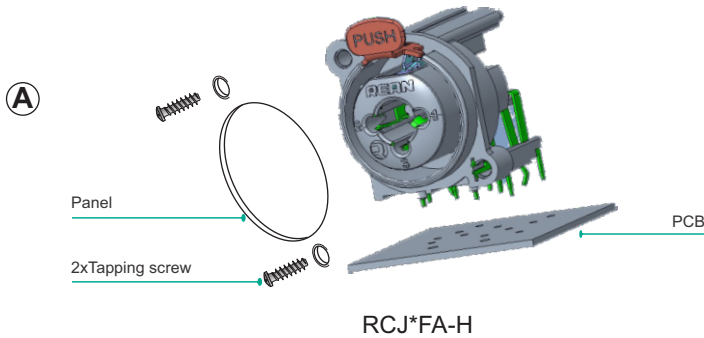


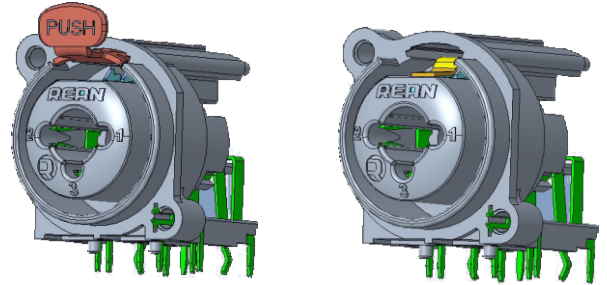


# ASSEMBLY INSTRUCTION

## RJ\*FA | XLR/Jacks switching Combo A

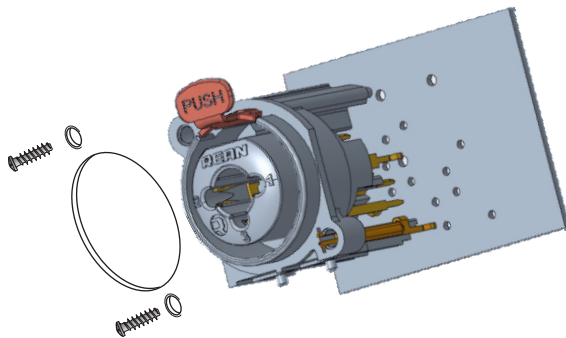


**A** Solder the connector onto the PCB, put the connector onto the rear of panel and then tighten the tapping screws.

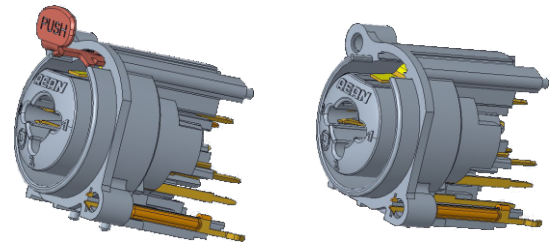


RCJ\*FA-H

RCJ\*FA-H-0

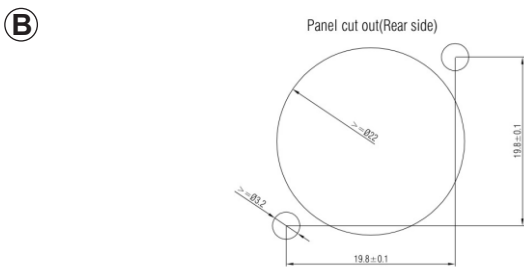


RCJ\*FA-V

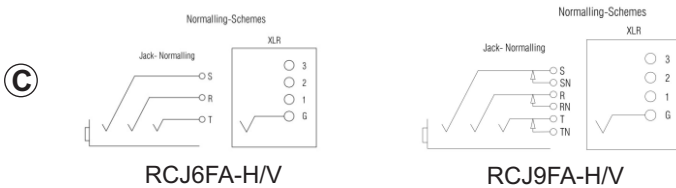


RCJ\*FA-V

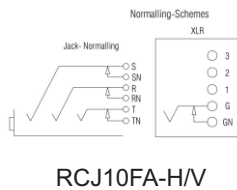
RCJ\*FA-V-0



**B** Panel cut out



**C** Circuits.



RCJ10FA-H/V

XLR/Jacks switching Combo A:  
Find more details on  
[www.rean-connectors.com](http://www.rean-connectors.com)



Neutrik AG	LI	T: +423 / 237 24 24	F: +423/232 53 93	Neutrik France	FR	T: +33 1/4131 6750	F: +33 1/4131 0511
Neutrik USA Inc.	USA	T: +1 704 / 972 3050	F: +1 704/438 9202	Neutrik Tokyo Ltd.	JP	T: +81 3/3663 4733	F: +81 3/3663 4796
Neutrik (UK) Ltd.	UK	T: +44 1983 / 811 441	F: +44 1983/811 439	Neutrik Hong Kong Ltd.	HK	T: +852/2687 6055	F: +852/2687 6052
Neutrik Vertriebs GmbH	DE/NL/AT/DK	T: +49 8131 / 280 890	F: +49 8131/280 830	Neutrik Trading Ltd.	CN	T: +0574/8825 0833	F: +0574/8826 5000

Draft. Nr.: NCN 021 | Update: 2021-07-20 | Data subject to change without prior notice. © 2021 REAN®. REAN® is registered trademark of Neutrik AG. ALL RIGHTS RESERVED.