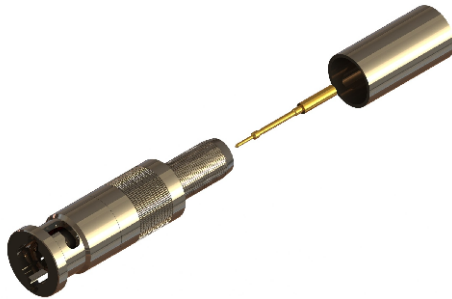
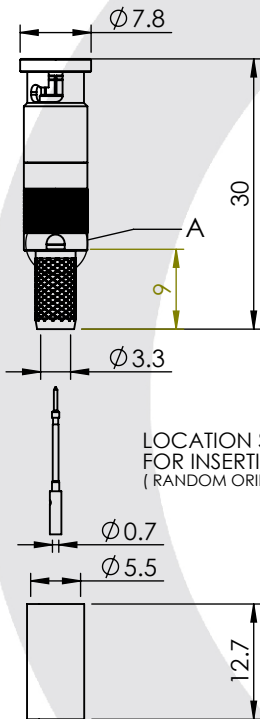


MICRO BNC STRAIGHT CRIMP / CRIMP PLUG

67-005-B66-FA



images for illustration purposes only



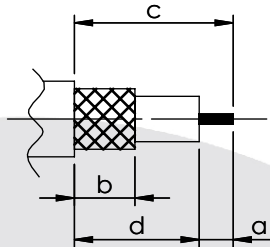
LOCATION SLOT FOR INSERTION TOOL (RANDOM ORIENTATION)

DETAIL A

Suitable for Cables:

(FA) Belden 1855ENH, Draka 0.6/2.8AF, BD SD01, Image 360

Stripping Dimensions



- a = 4.0 mm
- b = 8.0 mm
- c = 16.0 mm
- d = 12.0 mm

* CUT FOIL TO DIM. "b"

Assembly Procedure: AP001

Tooling

- Centre Contact: SQ 0.95mm A/F Tool No: 96-HTS-75
- Crimp Sleeve: Hex 5.41mm A/F Tool No: 96-HTS-75
- Alignment Tool: Not Applicable Extraction: 96-1132

Environmental Specification

- Operating Temp: -55 to +155 Deg C.
- IP Rating (Mated): IP 64

Electrical Specification

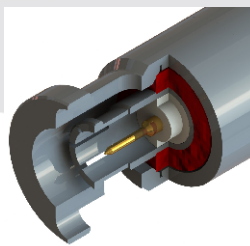
- Impedance: 75 Ohm
- Frequency: 0-6 GHz
- Dielectric W/V: 1000 Veff
- Insulation res: 10000 M-Ohm

Mechanical Specification

- Contact Retention: 10 N min
- Cable Retention: 150 N min
- Mating cycles: 500
- Weight: 5.63 g

Connector Interface

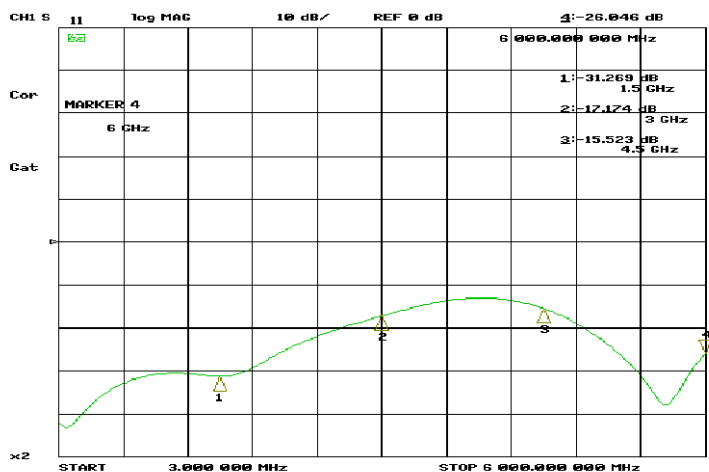
image for illustration purposes only



Performance

- 31.3 dB @ 1.0 GHz
- 17.2 dB @ 2.0 GHz
- 15.5 dB @ 4.5 GHz
- 26.0 dB @ 6.0 GHz

Return Loss Graph



7	SPRING	STAINLESS STEEL	N/A
6	COUPLING NUT	BRASS	NICKEL
5	GASKET	SILICONE	N/A
4	CRIMP SLEEVE	BRASS	NICKEL
3	INSULATOR	PTFE	N/A
2	CENTRE CONTACT	BERYLLIUM COPPER	GOLD
1	BODY	BRASS	NICKEL
ITEM	DESCRIPTION	MATERIAL	PLATING

A4	SHEET 1 OF 1	DIMENSIONS ARE IN MILLIMETRES		
REVISION :	A05	NAME	SIGNATURE	DATE
ISSUE :	4	DRAWN	IG	07/03/2012
		CHK'D	GE	14/03/2012
		APPV'D		
6-8 COLNE ROAD, TWICKENHAM, MIDDLESEX. TW1 4JR				
THE INFORMATION IS GIVEN AS AN INDICATION ONLY AND IS SUBJECT TO CHANGE WITHOUT NOTICE. IN THE CONTINUAL GOAL TO IMPROVE OUR PRODUCTS, WE RESERVE THE RIGHT TO MAKE ANY MODIFICATIONS NECESSARY WITHOUT PRIOR NOTICE.				